



# Liquor Store - Approved for Four Gas Pumps

11404 E. US 24 Highway Sugar Creek, Kansas



## SALE PRICE: \$1,200,000 | 9,100 SF BUILDING

### DEMOGRAPHICS

	1 mile	3 miles	5 miles
Estimated Population	10,079	54,503	139,785
Avg. Household Income	\$65,946	\$71,274	\$72,443

- Turn-key liquor store for sale
- Active liquor license and approved permit for four gas pumps
- New roof, parking lot, HVAC, coolers, hood system, stove, grease trap, three bay sink, and freezer
- Basement is a former bar with separate entrance - Perfect for a cigar lounge, speakeasy, event space, etc.
- Sale includes all furniture, fixtures, and equipment  
Inventory to be negotiated separately.
- [Click Here To View Virtual Tour](#)



CLICK HERE TO VIEW MORE  
LISTING INFORMATION

For More Information Contact:

GRANT SUMMERS | 816.412.7307 | [gsummers@blockandco.com](mailto:gsummers@blockandco.com)

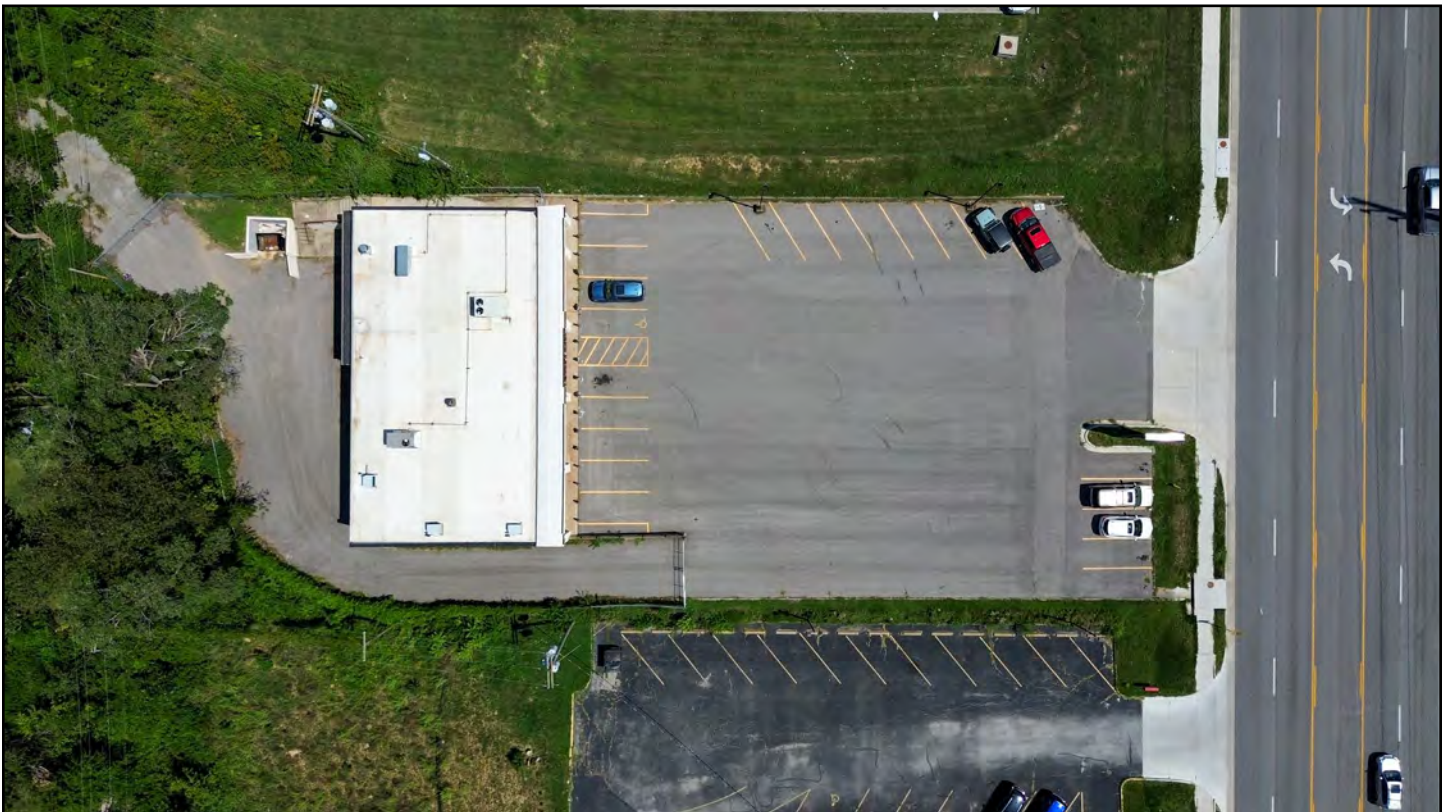
Exclusive Agent



# Liquor Store - Approved for Four Gas Pumps

11404 E. US 24 Highway Sugar Creek, Kansas

## DRONE PHOTOS



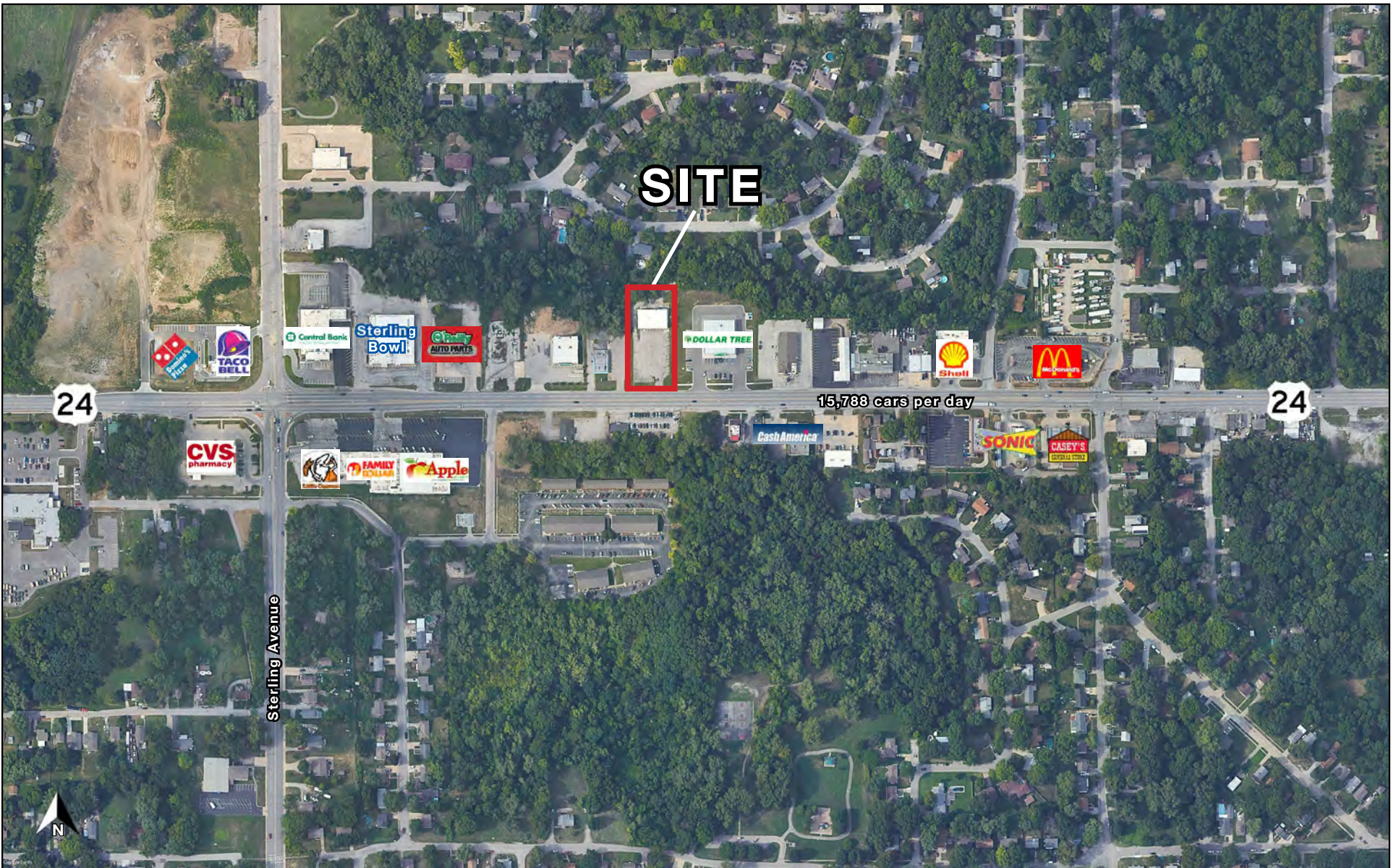




# Liquor Store - Approved for Four Gas Pumps

11404 E. US 24 Highway Sugar Creek, Kansas

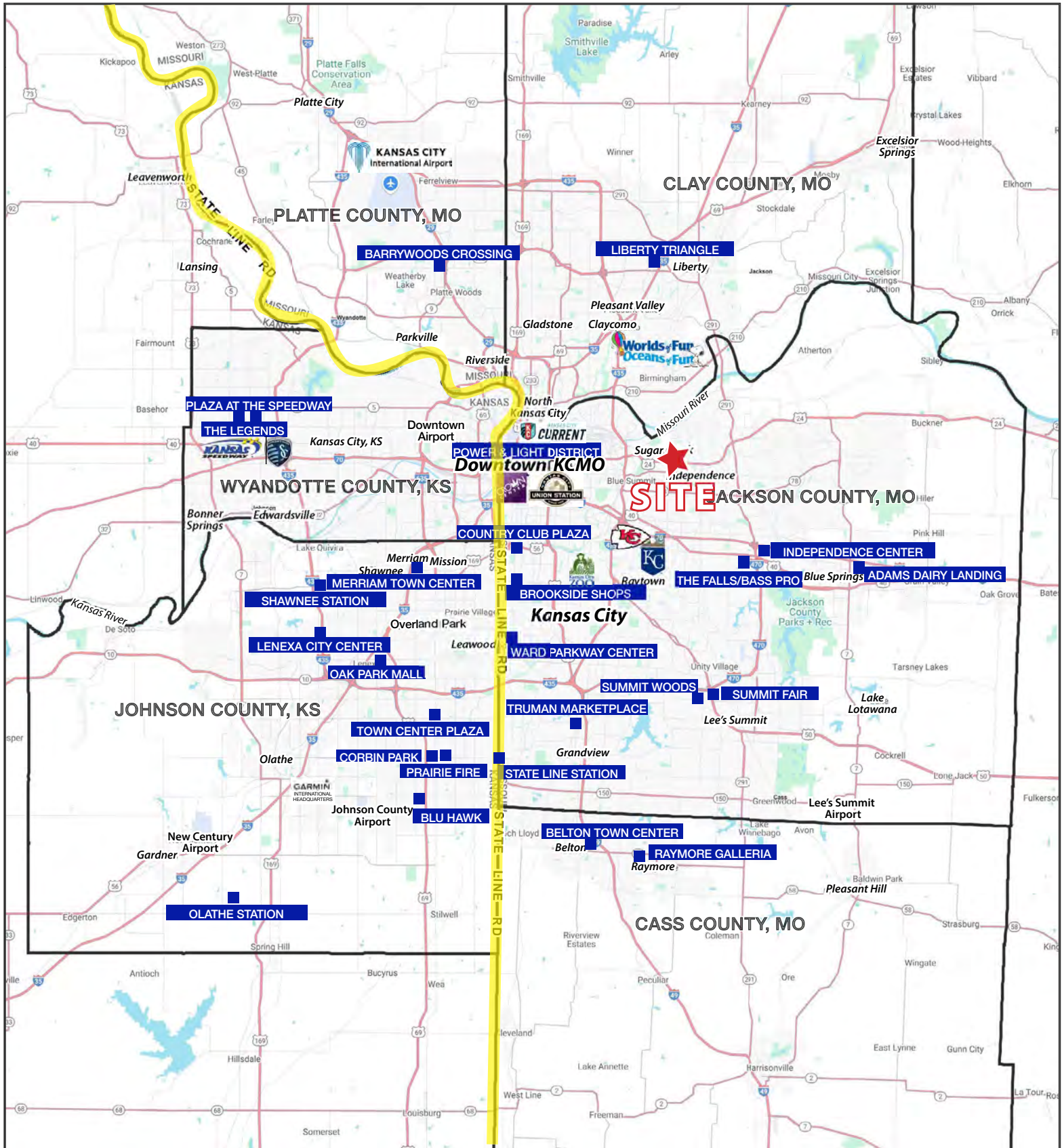
AERIAL





# Liquor Store - Approved for Four Gas Pumps

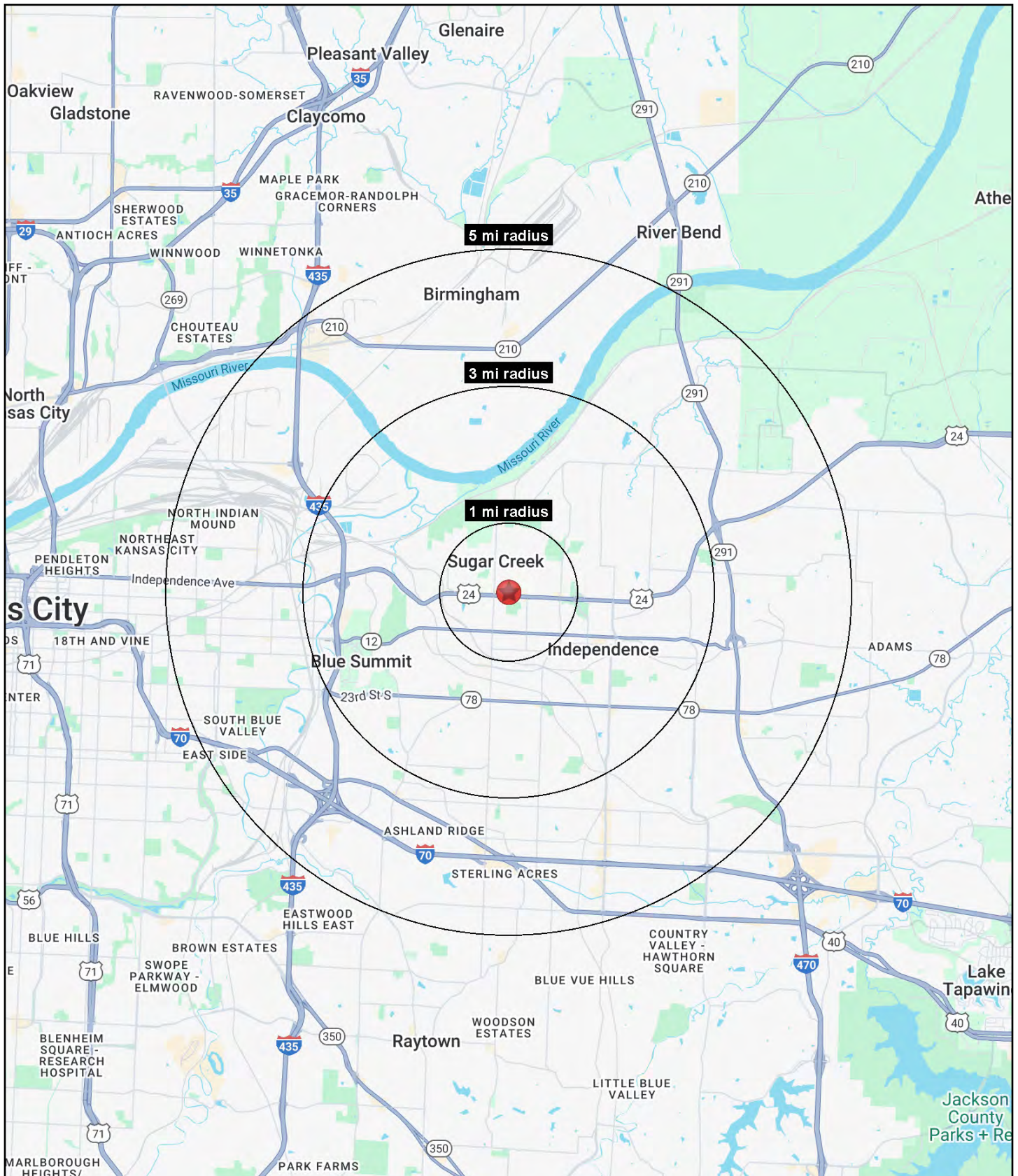
## 11404 E. US 24 Highway Sugar Creek, Kansas





# Liquor Store - Approved for Four Gas Pumps

## 11404 E. US 24 Highway Sugar Creek, Kansas





# Liquor Store - Approved for Four Gas Pumps

## 11404 E. US 24 Highway Sugar Creek, Kansas

11404 E. US 24 Highway Sugar Creek, MO 64054	1 mi radius	3 mi radius	5 mi radius
<b>Population</b>			
2025 Estimated Population	10,079	54,503	139,785
2030 Projected Population	9,929	54,013	137,726
2020 Census Population	9,686	53,976	139,073
2010 Census Population	9,585	53,155	136,617
Projected Annual Growth 2025 to 2030	-0.3%	-0.2%	-0.3%
Historical Annual Growth 2010 to 2025	0.3%	0.2%	0.2%
2025 Median Age	39.6	37.9	36.7
<b>Households</b>			
2025 Estimated Households	4,198	22,861	56,119
2030 Projected Households	4,161	22,901	55,790
2020 Census Households	4,076	22,455	55,784
2010 Census Households	4,067	22,210	54,671
Projected Annual Growth 2025 to 2030	-0.2%	-	-0.1%
Historical Annual Growth 2010 to 2025	0.2%	0.2%	0.2%
<b>Race and Ethnicity</b>			
2025 Estimated White	74.5%	72.7%	63.1%
2025 Estimated Black or African American	9.7%	10.0%	14.0%
2025 Estimated Asian or Pacific Islander	1.4%	1.2%	2.4%
2025 Estimated American Indian or Native Alaskan	0.5%	0.7%	0.7%
2025 Estimated Other Races	13.9%	15.4%	19.7%
2025 Estimated Hispanic	14.3%	16.0%	21.1%
<b>Income</b>			
2025 Estimated Average Household Income	\$65,946	\$71,274	\$72,443
2025 Estimated Median Household Income	\$49,895	\$53,894	\$56,478
2025 Estimated Per Capita Income	\$27,808	\$30,045	\$29,172
<b>Education (Age 25+)</b>			
2025 Estimated Elementary (Grade Level 0 to 8)	4.9%	4.5%	4.8%
2025 Estimated Some High School (Grade Level 9 to 11)	11.2%	8.9%	8.6%
2025 Estimated High School Graduate	35.0%	36.9%	36.6%
2025 Estimated Some College	22.9%	25.2%	22.7%
2025 Estimated Associates Degree Only	6.4%	6.8%	8.8%
2025 Estimated Bachelors Degree Only	14.2%	11.7%	12.0%
2025 Estimated Graduate Degree	5.4%	5.9%	6.5%
<b>Business</b>			
2025 Estimated Total Businesses	213	1,561	4,357
2025 Estimated Total Employees	1,694	12,646	48,825
2025 Estimated Employee Population per Business	8.0	8.1	11.2
2025 Estimated Residential Population per Business	47.4	34.9	32.1

©2025, Sites USA, Chandler, Arizona, 480-491-1112 Demographic Source: Applied Geographic Solutions 5/2025, TIGER Geography - RS1